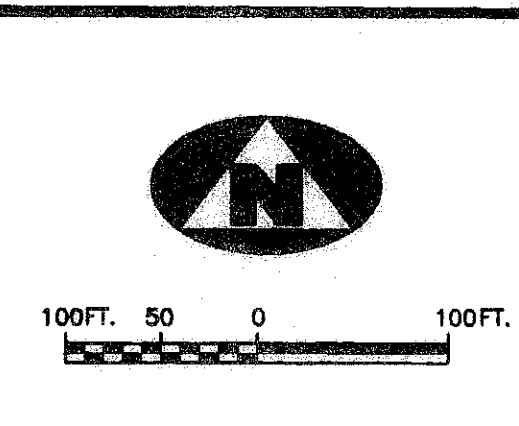
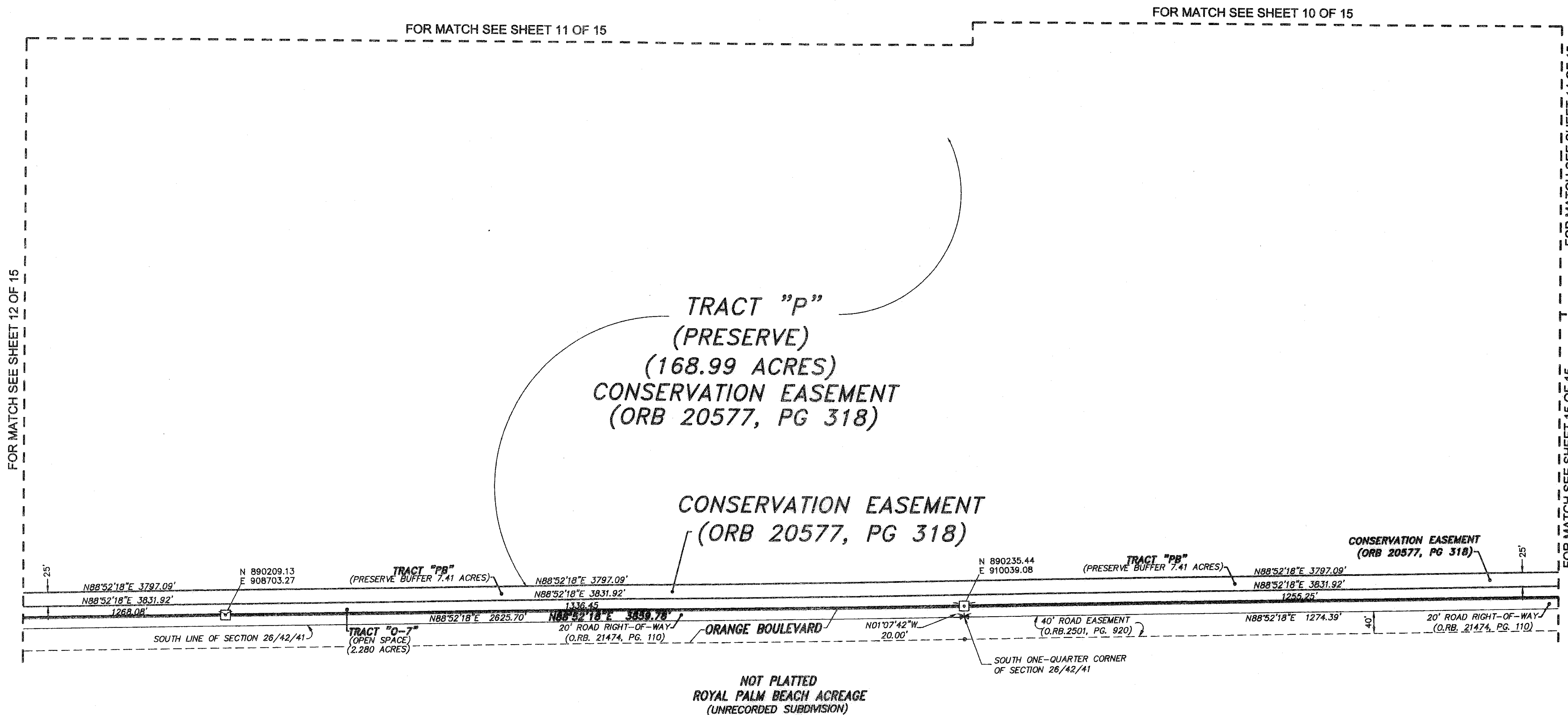


(A PART OF STONEWALL ESTATES PLANNED UNIT DEVELOPMENT)
BEING A REPLAT OF TRACT "ER", BAYHILL CLUBHOUSE AND MAINTENANCE AREA, RECORDED IN PLAT BOOK 109, PAGE 158, PUBLIC RECORDS, PALM BEACH COUNTY AND LYING AND BEING IN SECTION 26, TOWNSHIP 42 SOUTH, RANGE 41 EAST, PALM BEACH COUNTY, FLORIDA.
A PORTION OF



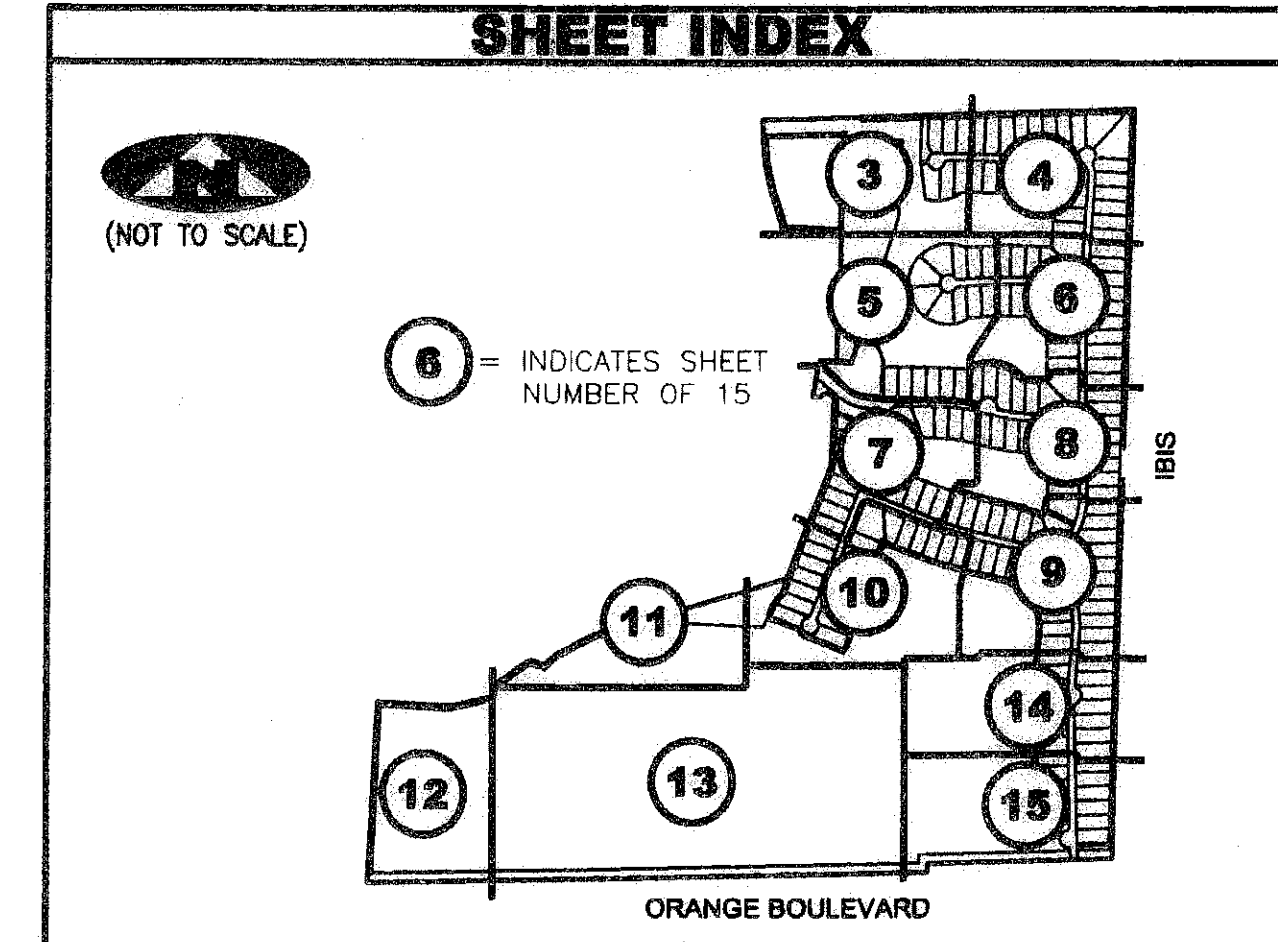
SUBDIVISION BAYHILL ESTATES
BOOK 110 PAGE 240
RECORDING CO. B.
ZONING R-2E
QUAD # 59
SE. 1/4
T42. R41W
P.00 NAME STONEWALL EST.

SURVEYOR'S NOTES

1. THE BASE BEARING, AS SHOWN HEREON, IS N01°23'58"E ALONG THE EAST LINE OF SECTION 26/42/41.
2. IN THOSE INSTANCES WHERE UTILITY OR DRAINAGE STRUCTURES ARE CONSTRUCTED IN CONFLICT WITH THE PLATTED PERMANENT CONTROL POINT POSITION STRADDLERS MONUMENTED AS PERMANENT CONTROL POINTS WILL BE SET TO REFERENCE THE PLATTED POSITION.
3. LINES THAT INTERSECT CURVES ARE NOT RADIAL UNLESS OTHERWISE NOTED.
4. THIS INSTRUMENT WAS PREPARED BY WM. R. VAN CAMPEN, P.S.M. NO. 2424, IN AND FOR THE OFFICES OF ASSOCIATED LAND SURVEYORS, INC., 4152 WEST BLUE HERON BOULEVARD, SUITE 121, RIVIERA BEACH, FLORIDA, 33407
5. THE COORDINATES SHOWN HEREON ARE STATE PLANE GRID COORDINATES ACCORDING TO THE TRANSVERSE MERCATOR PROJECTION OF THE FLORIDA EAST ZONE, N.A.D. 1983, PER THE 1990 ADJUSTMENT.
6. THE GROUND DISTANCE TO GRID DISTANCE SCALE FACTOR IS 1.000015 (GROUND DISTANCE X SCALE FACTOR = GRID DISTANCE)
7. THE LINEAR DIMENSIONS SHOWN HEREON ARE GROUND DISTANCES IN U.S. FEET AND DECIMAL PARTS THEREOF.
8. THE BEARINGS SHOWN HEREON ARE BASED ON STATE PLANE GRID AZIMUTHS

LEGEND

(R)	DENOTES A RADIAL LINE	R	DENOTES RADIUS DISTANCE	N = 123456789	DENOTES A NORTHING AND EASTING COORDINATE
C/L	DENOTES A CENTERLINE	L	DENOTES ARC LENGTH DISTANCE	E = 123456789	
DE	DENOTES DRAINAGE EASEMENT	CA	DENOTES CENTRAL ANGLE		
WLE	DENOTES WATER LINE EASEMENT	LCB	DENOTES LONG CHORD BEARING		
LS	DENOTES LIFT STATION EASEMENT	CHD	DENOTES CHORD DISTANCE	☐	DENOTES A FOUND PERMANENT REFERENCE MONUMENT (L.B. 4133)
PG	DENOTES PAGE	ORB	DENOTES OFFICIAL RECORDS BOOK	☐	DENOTES A SET PERMANENT REFERENCE MONUMENT (L.B. 7344)
PE	DENOTES BUFFER EASEMENT	RWBE	DENOTES RIGHTS-OF-WAY BUFFER EASEMENT	●	DENOTES A FOUND PERMANENT CONTROL POINT
LMAE	DENOTES LAKE MAINTENANCE ACCESS EASEMENT			⊙	DENOTES A SET PERMANENT CONTROL POINT (L.B. 7344)



RECORD PLAT OF BAYHILL ESTATES PUD

FILE: P87PLAT

FB: WQ.NO.: P87

SCALE: 1"=100' DATE: 2/01/05

DWN: EB SHEET 13 OF 15

ASSOCIATED LAND SURVEYORS, INC.
4152 W. BLUE HERON BOULEVARD-SUITE 121
RIVIERA BEACH FLORIDA 33404 LB NO. 7344
PHONE: (561) 848-2102 FAX: (561) 844-9659 EMAIL: ALSURVEY@AOL.COM